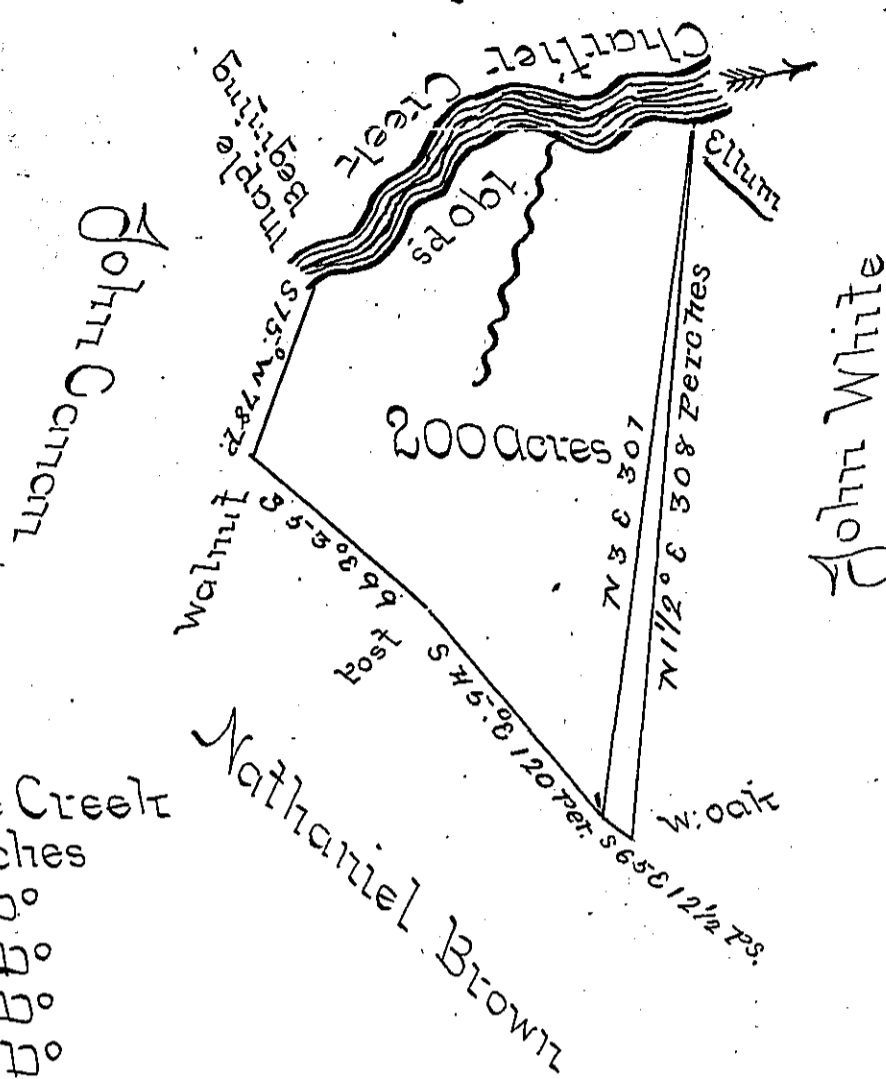


The allowance is granted the Courses from the  
 No. will be 565° 30' 12 1/2 per. to a post and from thence  
 N 82° 30' 30" perches to the Ellum &c — along  
 the dotted lines —



Thence up the  
 meanders of the Creek  
 S 74° W 42 perches  
 N 82° W 30 - 10°  
 S 62° W 30 - 10°  
 S 38° W 58 - 10°  
 S 65° W 30 - 10°  
 190  
 to the Beginning

The above is a draught of a Tract of Land lying upon Char-  
 liers Creek Washington County Called Sugar Tree Bottom  
 Containing two Hundred Acres Strict measure Surveyed Febru-  
 ary 25<sup>th</sup> 1788. In pursuance of an application No 3263. -  
 Granted to William Young May 23<sup>d</sup> 1769. Agreeably to an  
 order of the Honible Board of Property dated 5<sup>th</sup> day of Nov-  
 ember 1787 -

Presley Newill } D  
 Matthew Ritchie } Sr

John Lukens Esq. }  
 Surveyor Genl. - }

IN TESTIMONY that the above is a copy of the original remaining on file in  
 the Department of Internal Affairs of Pennsylvania, made  
 conformably to an Act of Assembly approved the 16th day of  
 February, 1833, I have hereunto set my Hand and caused  
 the Seal of said Department to be affixed at Harrisburg,  
 this second day of October -

James W. Latta  
 Secretary of Internal Affairs.